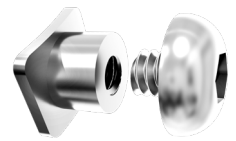




Low Force Spring Delivers 150 Grams Of Force



Low Profile
Bondable Pivot
& Screw

Introducing CS®5 Bondable, derived from its renowned predecessor, the CS®5 Bondable represents a groundbreaking advancement in orthodontic technology. **CS®5 Bondable directly bonds to the tooth, offering a seamless integration that enhances the effectiveness of orthodontic treatments, especially when used alongside aligners.** Featuring the innovative Bondable pivot, meticulously crafted for patient comfort with its low-profile design, this device ensures a smooth and comfortable orthodontic experience. The accompanying low-profile screw effortlessly attaches the spring to the pivot, simplifying the application process for orthodontists. Moreover, the CS®5 Bondable spring is engineered to exert a gentle yet effective **force of only 150 grams**, facilitating the correction of Class II or III cases with **remarkable precision** and minimal discomfort. With Bondable CS®5, orthodontists can elevate their treatment outcomes, providing patients with the confidence of a beautifully aligned smile.

Great For Aligners: Specifically for use alongside aligners, CS®5 Bondable seamlessly integrates into various orthodontic treatment plans for enhanced efficiency.

Gentle, Effective Correction: The low force spring which generates 150 grams of force, accompanied with low-profile Bondable pivot ensures predictable results.



Actual Case Submitted By Dr. Michael Williams



CS®5 Bondable Kits & Components

5 PATIENT KIT	ITEM #
BONDABLE PIVOT	
10mm Spring Kit	#40-LF10
7mm Spring Kit	#40-LF07
BONDABLE CS®5 COMPONENTS	ITEM #
7mm Low Force Spring	#40-1007
10mm Low Force Spring	#40-1010
Bondable Pivot	#40-2000
Low Profile Screw	#40-5000
Magnetic Allen Pencil	#3823-EM
Magnetic Charger	#3823-500

5 Patient Bondable Kit:

- 10 CS®5 Low Force Springs
- 20 Bondable Pivots
- 20 Low Profile Screws
- 1 Magnetic Allen Pencil
- 1 Magnetic Charger



www.dynaflex.com | 866-346-5665

040924 © 2024 DynaFlex®, Lake St. Louis, MO 63367. Printed in U.S.A.

