



# THE ULTIMATE CHAIRSIDE CLASS II & CLASS III CORRECTION APPLIANCE

Greiner  
Orthodontics

**Greiner Orthodontics GmbH**

Im Schröder 43

D- 75228 Ispringen

Tel.: +49 7231 800 8906

Fax: +49 7231 800 8907

[www.GreinerOrthodontics.de](http://www.GreinerOrthodontics.de)



 **DynaFlex<sup>®</sup>**

[www.dynaflex.com](http://www.dynaflex.com)

866.346.5665

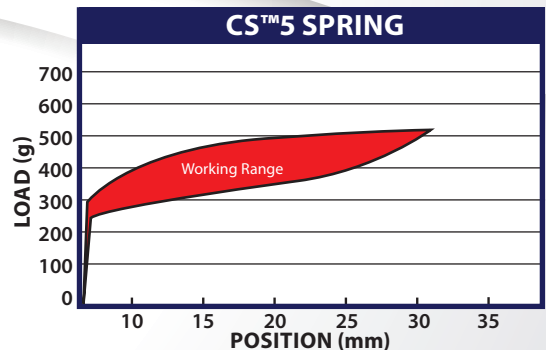
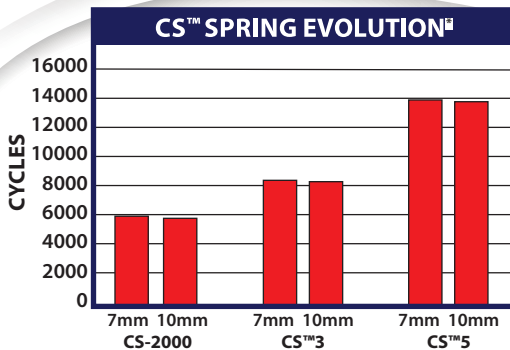


Simple,  
Effective,  
Proven



The all new DynaFlex® exclusive CS™5 System delivers non-compliance treatment for all Class II & Class III cases. The **NEW Twist-Lock™** Pivot was skillfully designed as a one-piece component with no moving parts. This will guarantee a no-hassle installation and improved performance. The widely known CS™ spring is made from an exclusive nickel titanium material with specially built key-hole ends that improve the strength and durability by 40%. This spring will load force instantly and remain extremely consistent throughout treatment with the confidence of longer usage. The benefit is a smoother, more constant force that performs better and lasts longer.

## NEW DESIGN CREATES INSTANT LOADING AND MORE **CONSISTENT FORCE LEVELS**



*\*Test results were recorded during extremely abusive conditions.*

# YOUR CLASS II & CLASS III SOLUTION

The CS™ system creates instant and consistent force levels, providing a smoother, more constant force that performs better and lasts longer. This system is one of the most successful Class II and Class III chairside appliances used in the world due to its simplicity, effectiveness and value pricing as compared to other systems available today. **Join the thousands of doctors worldwide that use the CS™ System.** This is a must have system for your orthodontic tool box.

## TIPS FOR CLASS II TREATMENT

No more than 2mm of initial mandibular advancement is recommended. At subsequent visits, reposition the pivots or change from 10mm springs to 7mm springs for further mandibular advancement.



## CLASS III ARCHWIRE SET-UP EXAMPLE

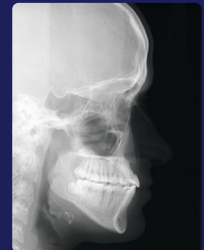


## RESULTS MATTER

BEFORE



AFTER



Class III X-Rays

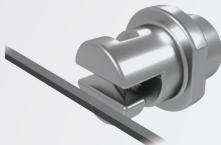
Case photos compliments of  
Dr. Andy Hayes of St. Louis, MO

# TWIST-LOCK™ PIVOT SETUP

The NEW Twist-Lock™ Pivot was skillfully designed as a one-piece component with no moving parts. This will guarantee a no-hassle installation and improved performance.



**Exclusive  
CS™  
Twist-Lock™  
Pivot**



DynaFlex® Narrow Hemostat  
Item # 1400-025M

## STEP 1:

Place the Twist-Lock™ pivot with slot horizontal onto the archwire by holding the flat sides of the pivot. *\*We recommend using standard narrow hemostat for easy installation.*



## STEP 2:

Once the pivot is on the archwire rotate 90°, lock into place and secure with hybrid screw.

## STEP 3:

Place CS5® spring onto pivot and secure in place with hybrid screw.

CLASS II



CLASS III



## IMPORTANT NOTES:

- Ensure the NiTi Spring Eyelet is not caught in between the Hybrid Screw and Pivot Opening.
- The Twist-Lock™ Pivot should be used on wire sizes from .016 x .022 up to .021 x .025.
- Screw must be "Active" with Twist-Lock™ pivot.

# USING THE HYBRID SCREW



For use in the active position, simply insert the screw into pivot and tighten to lock into desired position on the archwire.

## Archwire size needed for locking.

Slot Size	.018	.022
Min. Lock Size	.016 x .022	.018 x .025
Max Lock Size	.018 x .025	.021 x .025



For use in a passive position, simply cut off the tip of the hybrid screw with a hard wire cutter, allowing the pivot to move freely along archwire.

When used in a passive position, the pivot will be free to slide and rotate on archwire.



**Video Tutorial & Educational Animations  
Available online at [dynaflex.com](http://dynaflex.com)**

# MAGNETIC ALLEN PENCIL

The Allen Pencil is “charged” using an exclusive rare earth magnet. Once charged, it then uses magnetic forces to latch onto the screw. The screw is easily retrievable out of the kit and remains on the Allen Pencil for placement and tightening within the patient’s mouth.

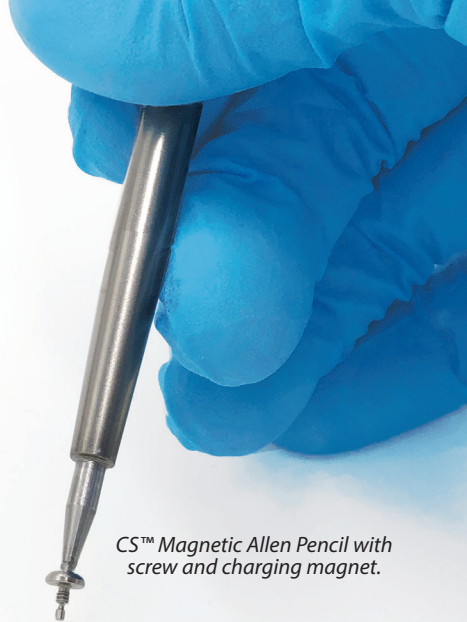
## Magnet Instructions:

- STEP 1:** Slide the Magnet onto the Allen Pencil tip to activate the magnetic force.
- STEP 2:** After 2-3 seconds, remove the magnet and set aside.
- STEP 3:** Proceed with CS® System installation using magnetically charged Allen Pencil.

## Additional Notes:

- Magnet is cold sterilizable only. Allen Pencil is heat sterilizable only.
- Once Magnet and Allen Pencil are sterilized, magnet can be stored engaged with Allen Pencil.
- Important: Keep magnet away from electronics, damage may occur.

***Fast & Reduces Chairtime***



*CS™ Magnetic Allen Pencil with screw and charging magnet.*



# TRADITIONAL PIVOT SETUP

## CLASS II

### STEP 1:

Place 2 pivots on the upper archwire, position pivots distal to the upper canines, insert and ligate archwire



### STEP 2:

Outside the mouth, assemble a spring, screw and pivot combination. Place assembled components onto the lower archwire. Insert and ligate archwire positioning the pivots mesial to the lower first molars



### STEP 3:

Using a hemostat, stretch spring eyelet onto the upper pivot and secure in place with a screw



## CLASS III

### STEP 1:

Place 2 pivots on the lower archwire, position pivots distal to the lower canines, insert and ligate archwire



### STEP 2:

Outside the mouth, assemble a spring, screw and pivot combination. Place assembled components onto the upper archwire. Insert and ligate archwire positioning the pivots mesial to the upper first molars



### STEP 3:

Using a hemostat, stretch spring eyelet onto the lower pivot and secure in place with a screw





# Simple, Effective, Proven

*Join the thousands of doctors worldwide that use the CS system and enjoy incredible results.*

"The CS™ System is an incredible new development in non-compliance therapy. The new spring provides a smoother, more consistent force, allowing for better treatment results and increased patient comfort."

**Dr. Michael Williams, DDS, MS | The Gulf Coast Center for Advanced Cosmetic Orthodontics**

## *Class II Treatment*

BEFORE



AFTER



## *Class III Treatment*

BEFORE



AFTER







## CS™5 SPRING

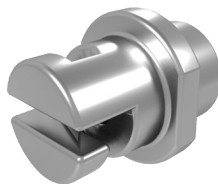
Instant Loading  
Constant Force

## What's Included: 5 Patient:

- 10 CS™5 NiTi Springs
- 20 Pivots (*Twist-Lock™ or Traditional*)
- 20 Magnetic Hybrid Screws
- 1 Allen Pencil
- 1 Magnet

## Master Kit:

- 20 10mm CS™5 Springs
- 20 7mm CS™5 Springs
- 20 Twist-Lock™ Pivots
- 20 Traditional Pivots
- 40 Hybrid Screws
- 1 Allen Pencil
- 1 Magnet



## *All New!* TWIST-LOCK PIVOT

Simplified Installation  
One-Piece Design  
Improved Performance



## MAGNETIC ALLEN PENCIL

Safer Placement  
Quick Installation

# ORDERING MADE EASY

To Order: **866.346.5665** or **www.dynaflex.com**

<b>5 PATIENT KIT</b>				
<b>TRADITIONAL PIVOT</b>		<b>.018 PIVOT</b>	<b>.022 PIVOT</b>	
10mm Spring		<b>#39-1810-5M</b>	<b>#39-2210-5M</b>	
7mm Spring		<b>#39-1807-5M</b>	<b>#39-2207-5M</b>	
<b>TWIST-LOCK™ PIVOT</b>				
10mm Spring		<b>#39-T10-5M</b>		
7mm Spring		<b>#39-T07-5M</b>		
<b>MASTER KIT</b>		<b>.018 PIVOT</b>	<b>.022 PIVOT</b>	
Complete		<b>#39T-018M</b>	<b>#39T-022M</b>	
<b>COMPONENTS</b>		<b>ITEM #</b>		
CS™5 Niti Spring 10mm		<b>#38094</b>		
CS™5 Niti Spring 7mm		<b>#38114</b>		
Traditional Pivot .022 x .025		<b>#3810-E</b>		
Traditional Pivot .018 x .025		<b>#3830-E</b>		
Twist-Lock™ Pivot		<b>#3810-T</b>		
Hybrid Screw		<b>#3815-5M</b>		
Allen Pencil		<b>#3823-EM</b>		
Magnet		<b>#3823-500</b>		

"DynaFlex® CS™ is my appliance of choice for Class III correction. It's easy to place and compatible with all bracket systems. It's also easy on the patient. You get excellent, proven results in a short period of time. I am always amazed at how much Class III correction you can achieve in just a couple of visits."

**Dr. Katherine Friedman | Litchfield County Orthodontics**