



THE ULTIMATE CHAIRSIDE **CLASS II & CLASS III** CORRECTION APPLIANCE

Greiner
Orthodontics



 **DynaFlex®**

www.dynaflex.com | 866.346.5665

YOUR CLASS II & CLASS III SOLUTION

The CS® system creates instant and consistent force levels, providing a smoother, more constant force that performs better and lasts longer. This system is one of the most successful Class II and Class III chairside appliances used in the world due to its simplicity, effectiveness and value pricing as compared to other systems available today. **Join the thousands of doctors worldwide that use the CS® System.** This is a must-have system for your orthodontic tool box.

TIPS FOR CLASS II TREATMENT

No more than 2mm of initial mandibular advancement is recommended. At subsequent visits, reposition the pivots or change from 10mm springs to 7mm springs for further mandibular advancement.

CLASS II SET-UP



CLASS III SET-UP



BEFORE



AFTER



Class III X-Rays

Case photos compliments of Dr. Andy Hayes of St. Louis, MO



"As a Class III corrector, I don't believe it has an equal. I had a patient present for an initial exam with a 10mm underbite and moderate/severe mandibular crowding. He sought orthodontic correction over the years and had been told that the only correction was through orthognathic surgery. He explained that since surgery was not a financially feasible option for him, would it be possible to at least align his lower incisors since they showed so much when he spoke. I agreed to this treatment option and we extracted lower first premolars and began orthodontic treatment with brackets on the upper and lower dentition. Once we placed full-size stainless steel wires we placed the CS® system in a class III direction. The results were impressive."

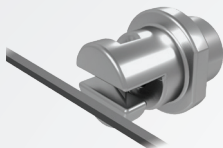
Dr. Ted Bennion | Bennion Orthodontics | Medford, Oregon

TWIST-LOCK PIVOT SETUP

The Twist-Lock Pivot was skillfully designed as a one-piece component with no moving parts. This will guarantee a no-hassle installation and improved performance.



**Exclusive
CS®
Twist-Lock
Pivot**



STEP 1:

Place the Twist-Lock Pivot with slot horizontal onto the archwire by holding the flat sides of the pivot.

**We recommend using standard wide tip hemostat for easy installation.*



STEP 2:

Once the pivot is on the archwire rotate 90° to lock into place.

STEP 3:

Place CS®5 spring onto pivot and secure in place with hybrid screw.

CLASS II



CLASS III



IMPORTANT NOTES:

- Ensure the NiTi Spring Eyelet is not caught in between the Hybrid Screw and Pivot Opening.
- The Twist-Lock Pivot should be used on wire sizes from .019 x .025 up to .021 x .025.
- Screw must be "Active" with Twist-Lock pivot.

HYBRID SCREW WITH NYLOK™

The all new Hybrid Screws are coated with blue *Nylok™ coating* around the threading of the screw. This medical grade material is blue for easy identification and guarantees a more secure fit. Coating the screw threading offers resistance to loosening within the pivot and seals the threading of the screw into place.



New!
Nylok™ Coating

Active Or Passive



For use in the active position, simply insert the screw into pivot and tighten to lock into desired position on the archwire.

****Archwire size needed for locking.**

| Slot Size | .018 Pivot | .022 Pivot | Twist-Lock | SL |
|---------------|-------------|-------------|-------------|-------------|
| Min Lock Size | .016 x .022 | .018 x .025 | .019 x .025 | .019 x .025 |
| Max Lock Size | .018 x .025 | .021 x .025 | .021 x .025 | .021 x .025 |



For use in a passive position, simply cut off the tip of the hybrid screw with a hard wire cutter, allowing the pivot to move freely along archwire.



Full System Video Tutorial & Educational Animations
Available Online. Visit www.dynaflex.com/cs-system

MAGNETIC ALLEN PENCIL

The Magnetic Allen Pencil is “charged” using an exclusive rare earth magnet. Once charged, it then uses magnetic forces to latch onto the screw. The screw is easily retrievable out of the kit and remains on the Magnetic Allen Pencil for placement and tightening within the patient’s mouth.

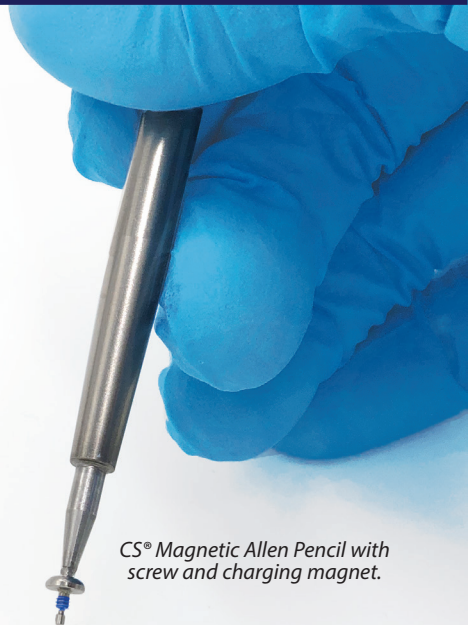
Magnet Instructions:

- STEP 1:** Slide the charging magnet onto the Allen Pencil tip to activate the magnetic force.
- STEP 2:** After 2-3 seconds, remove the charging magnet and set aside.
- STEP 3:** Proceed with CS® System installation using magnetically charged Allen Pencil.

Additional Notes:

- Charging magnet is cold sterilizable only. Allen Pencil is heat sterilizable only.
- Once Magnet and Allen Pencil are sterilized, magnet can be stored engaged with Allen Pencil.
- Important: Keep magnet away from electronics, damage may occur.

Fast & Reduces Chairtime



CS® Magnetic Allen Pencil with screw and charging magnet.



TRADITIONAL PIVOT SETUP

CLASS II

CLASS III

STEP 1:

Place 2 pivots on the upper archwire, position pivots distal to the upper canines, insert and ligate archwire



UPPER ARCH



LOWER ARCH

STEP 1:

Place 2 pivots on the lower archwire, position pivots distal to the lower canines, insert and ligate archwire

STEP 2:

Outside the mouth, assemble a spring, screw and pivot combination. Place assembled components onto the lower archwire. Insert and ligate archwire positioning the pivots mesial to the lower first molars



STEP 2:

Outside the mouth, assemble a spring, screw and pivot combination. Place assembled components onto the upper archwire. Insert and ligate archwire positioning the pivots mesial to the upper first molars

STEP 3:

Using a hemostat, stretch spring eyelet onto the upper pivot and secure in place with a screw



STEP 3:

Using a hemostat, stretch spring eyelet onto the lower pivot and secure in place with a screw

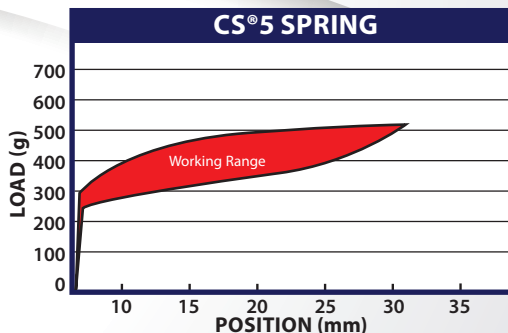
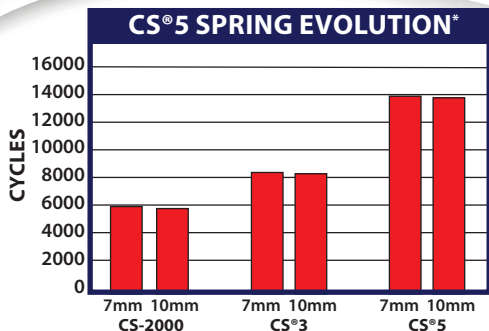


Simple,
Effective,
Proven



The DynaFlex® exclusive CS®5 System delivers non-compliance treatment for all Class II & Class III cases. The **Twist-Lock** Pivot* was skillfully designed as a one-piece component with no moving parts. This will guarantee a no-hassle installation and improved performance. The widely known CS® spring is made from an exclusive closed coil nickel titanium material with wide circumference eyelets on either end that improve mobility, strength and durability by 40%. This spring will load force instantly and remain extremely consistent throughout treatment with the confidence of longer usage. The benefit is a smoother, more constant force that performs better and lasts longer.

NEW DESIGN CREATES INSTANT LOADING AND MORE **CONSISTENT FORCE LEVELS**



**Test results were recorded during extremely abusive conditions.*



What's Included:

5 Patient:

- 10 CS®5 NiTi Springs
- 20 Pivots (*Twist-Lock, Traditional or SL*)
- 20 Magnetic Hybrid Screws
- 1 Magnetic Allen Pencil
- 1 Charging Magnet

Master Kit:

- 20 10mm CS®5 Springs
- 20 7mm CS®5 Springs
- 20 Twist-Lock Pivots
- 20 Traditional Pivots
- 40 Magnetic Hybrid Screws
- 1 Magnetic Allen Pencil
- 1 Charging Magnet



CS®5 SPRING

Instant Loading
Constant Force



TWIST-LOCK PIVOT

Simplified Installation
One-Piece Design
Improved Performance



SELF-LIGATING PIVOT

Reduce Chairtime
Simple Installation



MAGNETIC ALLEN PENCIL

Safer Placement
Quick Installation

ORDERING MADE EASY

To Order: **866.346.5665** or **www.dynaflex.com**

| 5 PATIENT KIT | | |
|--------------------------------------|-------------|-------------|
| TRADITIONAL PIVOT | .018 PIVOT | .022 PIVOT |
| 10mm Spring | #39-1810-5M | #39-2210-5M |
| 7mm Spring | #39-1807-5M | #39-2207-5M |
| TWIST-LOCK PIVOT | | |
| 10mm Spring | #39-T10-5M | |
| 7mm Spring | #39-T07-5M | |
| SELF-LIGATING PIVOT | | |
| 10mm Spring | #39-SL10-5M | |
| 7mm Spring | #39-SL07-5M | |
| MASTER KIT | .018 PIVOT | .022 PIVOT |
| Complete | #39T-018M | #39T-022M |
| COMPONENTS | ITEM # | |
| CS®5 Niti Spring 10mm | #38094 | |
| CS®5 Niti Spring 7mm | #38114 | |
| Traditional Pivot .022 x .025 | #3810-E | |
| Traditional Pivot .018 x .025 | #3830-E | |
| Self-Ligating Pivot | #3810-SL | |
| Self-Ligating Tool | #3823-SL | |
| Twist-Lock Pivot | #3810-T | |
| Magnetic Hybrid Screw With Nylok™ | #3815-5MC | |
| Magnetic Allen Pencil | #3823-EM | |
| Charging Magnet | #3823-500 | |



Simple, Effective, Proven

Join the thousands of doctors worldwide that use the CS® system and enjoy incredible results.

"The CS® System is an incredible new development in non-compliance therapy. The new spring provides a smoother, more consistent force, allowing for better treatment results and increased patient comfort."

Dr. Michael Williams, DDS, MS | The Gulf Coast Center for Advanced Cosmetic Orthodontics

Class II Treatment

Class III Treatment

BEFORE



BEFORE



AFTER



AFTER



061722 © DynaFlex®, Lake St. Louis. Printed in U.S.A.

CS Traditional Pivot-Patented by DynaFlex D794,804. CS Self-Ligating Pivot-Patented by DynaFlex D848,001.
CS Twist-Lock Pivot-Patented by DynaFlex D940,878 S. CS Hybrid Screw-Patented by DynaFlex D749,737.